

APEC

Smart Steel Structures

INDUSTRIAL AND COMMERCIAL BUILDINGS



Company Overview

- Established: 2007
- Employees: 60
- Office: Istanbul, Turkey
- Factory: Yalova, Turkey

Product Range

- Industrial and Commercial Buildings
- Residential Buildings
- Modular Buildings

Scope of Services

- Engineering Consulting
- Structural Steel Manufacturing
- Project Execution
- General Contractor



Advantages of Cold-Formed Steel Structures

- **Lighter and stronger** due to high strength-to-weight ratio
- **Fast** and **precise** production with high level of quality control
- Simple, quick and **accurate assembly**
- **Reduced foundation requirements and freight costs** due to lightweight superstructure
- **Reduced labor costs** as pre-engineered systems do not require highly-skilled on-site labor
- **Reduced site costs** since heavy machinery is not required and assembly duration is shorter
- **Earthquake resistance** due to lightness and ductility
- **Low-maintenance**, galvanized members do not require sand-blasting or painting
- Excellent performance characteristics with regards to **acoustic** and **thermal insulation**
- **Sustainable construction** with reduced carbon footprint
- 100% recyclable and **no material wastage**, reducing the overall environmental impact
- **Dry** production and site without the use of limited water resources
- **Quicker reach to the operational life** of the building due to the speed of construction
- **Demountable** with negligible loss, extendable or relocatable
- Offers **greater ROI** on overall investment due to the aforementioned benefits



Coca Cola Bottling Factory - Isparta, Turkey

Our Technology

High-Grade Steel

- S350, S390, S450, S550
- Hot-dipped galvanized zinc coating (275/m²)

Superior Engineering

- R&D department offers advanced solutions to various needs
- Local climate, ground and seismic conditions are taken into account
- Design conforms to National Regulations and International Standards
- State of the art engineering, design and production software

Cutting-Edge Manufacturing Techniques

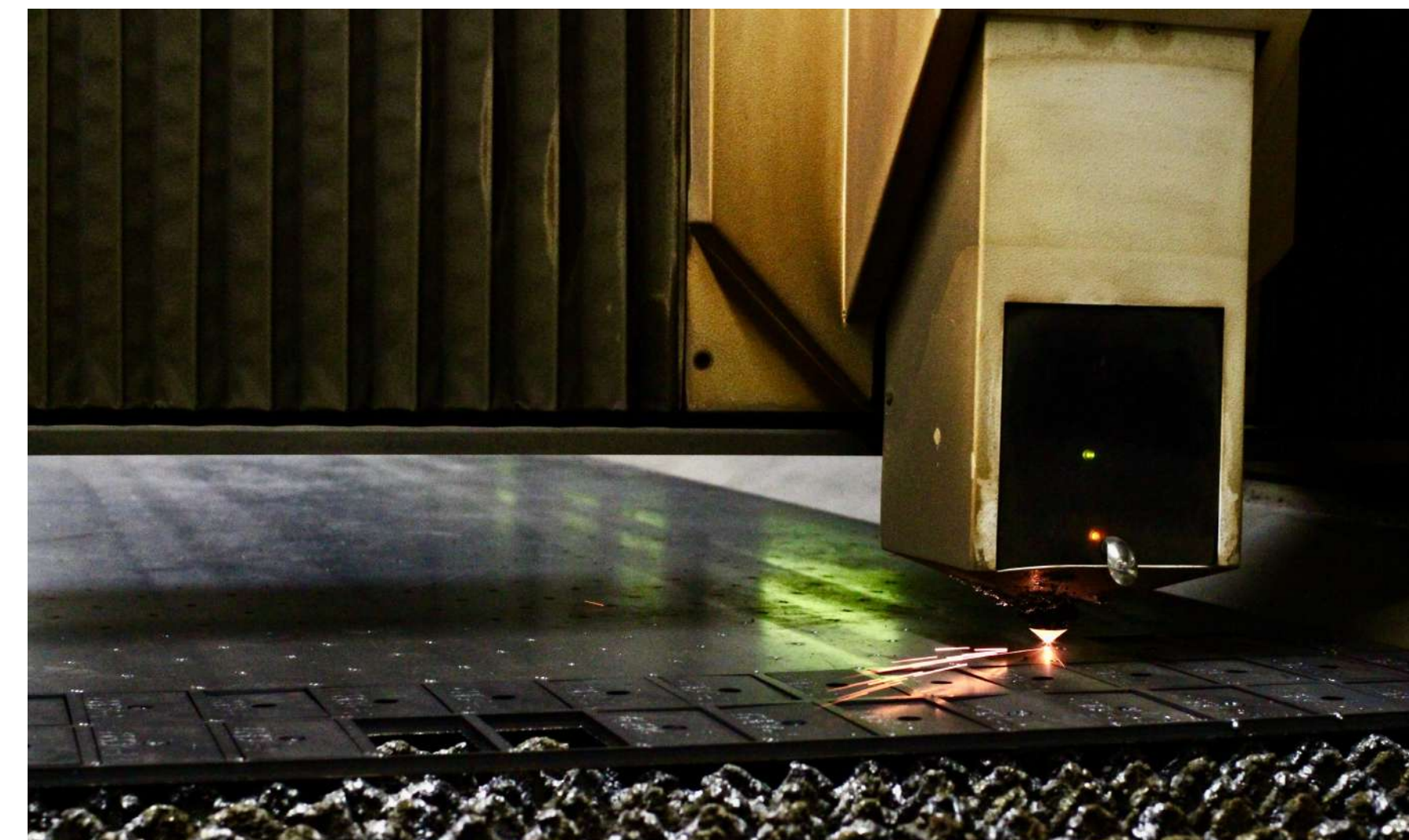
- CE certified production process
- Super fast production with automated lines
- CNC manufacturing lines eliminate human error
- Laser imprinted codes ensure smart packaging and assembly

Low Freight Costs and Quick Assembly

- High-strength bolted system
- Easy and fast assembly process with simple labor and light machinery
- Demounted and lightweight system enables even long-distance freight to be cost-efficient

Various Cladding Options

- Sandwich panels with different insulation and color options
- Single skin cladding with different forms and colors



Industrial and Commercial Buildings

Technical Specifications

- Clear spans up to 45 meters
- Clear heights up to 18 meters
- Weight of steel structure starting from 20 kg/m²
- Various cladding/insulation options

Building Types

- Production Facilities & Factories
- Warehouses & Storage Halls
- Hangars
- Logistics Facilities
- Supermarkets & Food Halls
- Agricultural and Farming Buildings
- Sports Halls
- Greenhouses
- Cold Storage
- Sales Offices & Showrooms



Pelit Antrepo Port Warehouse - Kocaeli, Turkey



Sports Hall - Istanbul, Turkey



National Wholesale Food Hall and Logistics Center - Senegal



Coca Cola Bottling Factory - Isparta, Turkey

NATIONAL WHOLESALE FOOD HALL AND LOGISTICS CENTER

Location: Diamniadio, Senegal

Area: 60.000 m²

Production and Assembly Duration: 8 months

APEEC

Smart Steel Structures



NATIONAL WHOLESALE FOOD HALL AND LOGISTICS CENTER

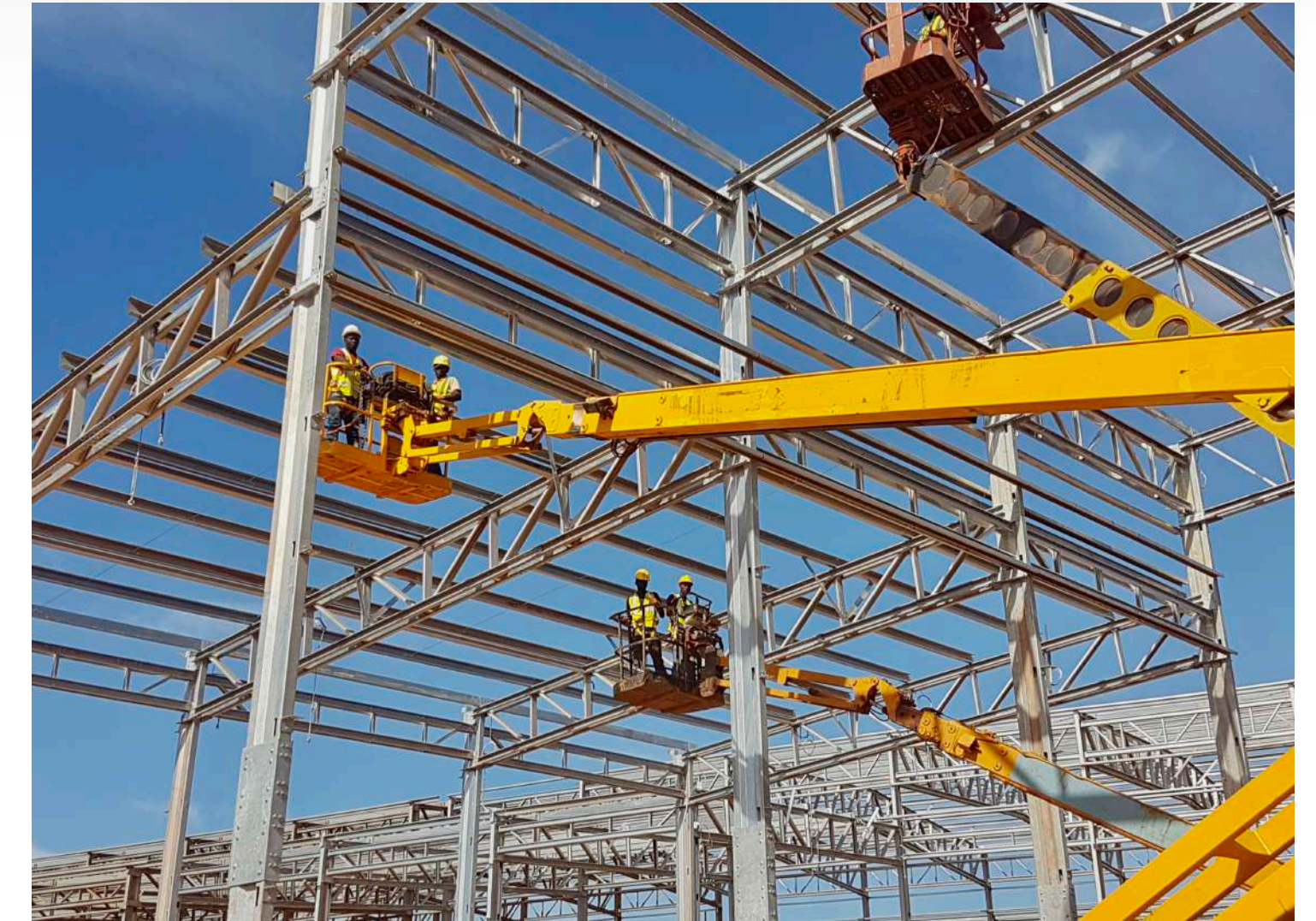
Location: Diamniadio, Senegal

Area: 60.000 m²

Production and Assembly Duration: 8 months

APEEC

Smart Steel Structures



NATIONAL WHOLESALE FOOD HALL AND LOGISTICS CENTER

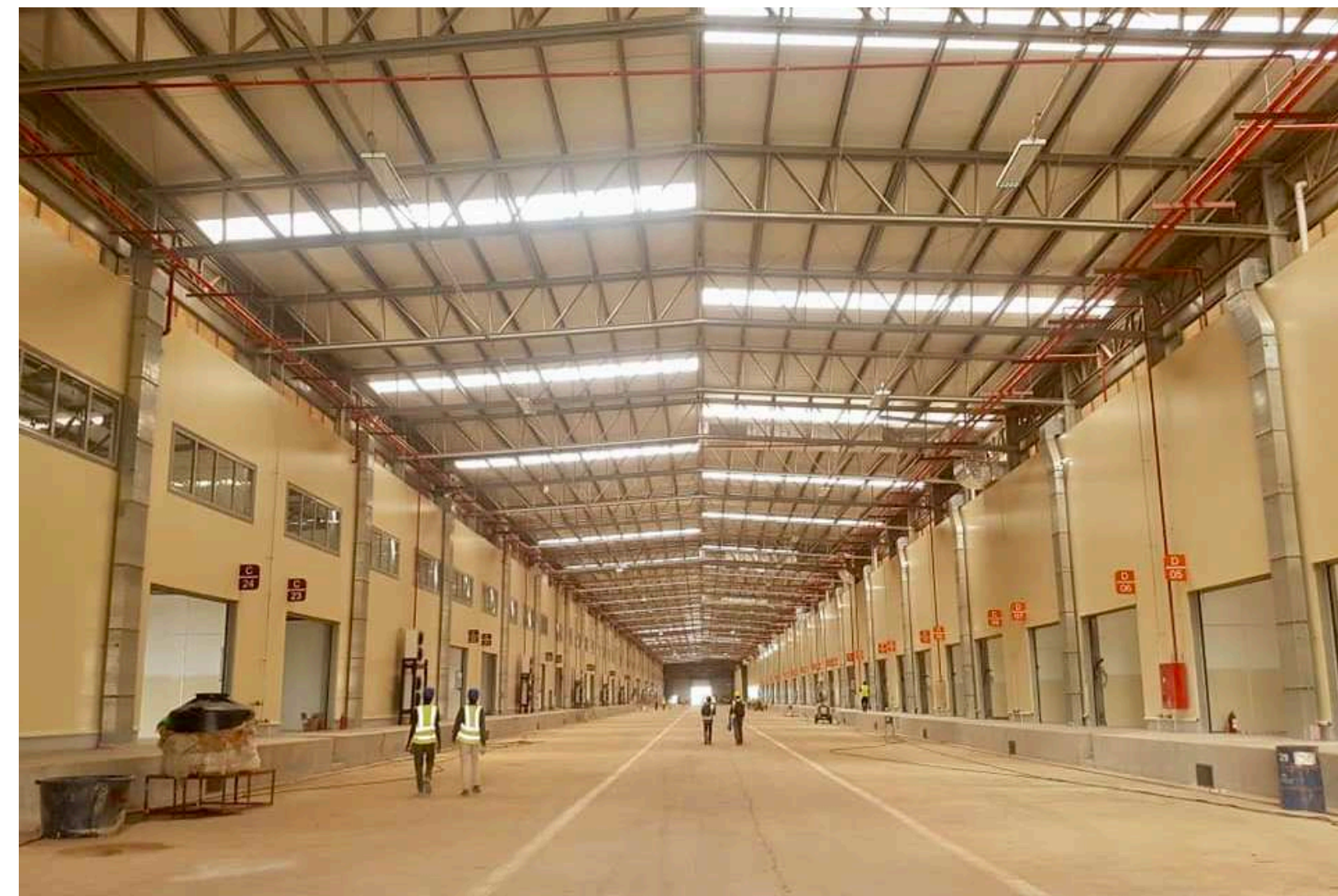
Location: Diamniadio, Senegal

Area: 60.000 m²

Production and Assembly Duration: 8 months

APEEC

Smart Steel Structures



COCA COLA BOTTLING FACTORY

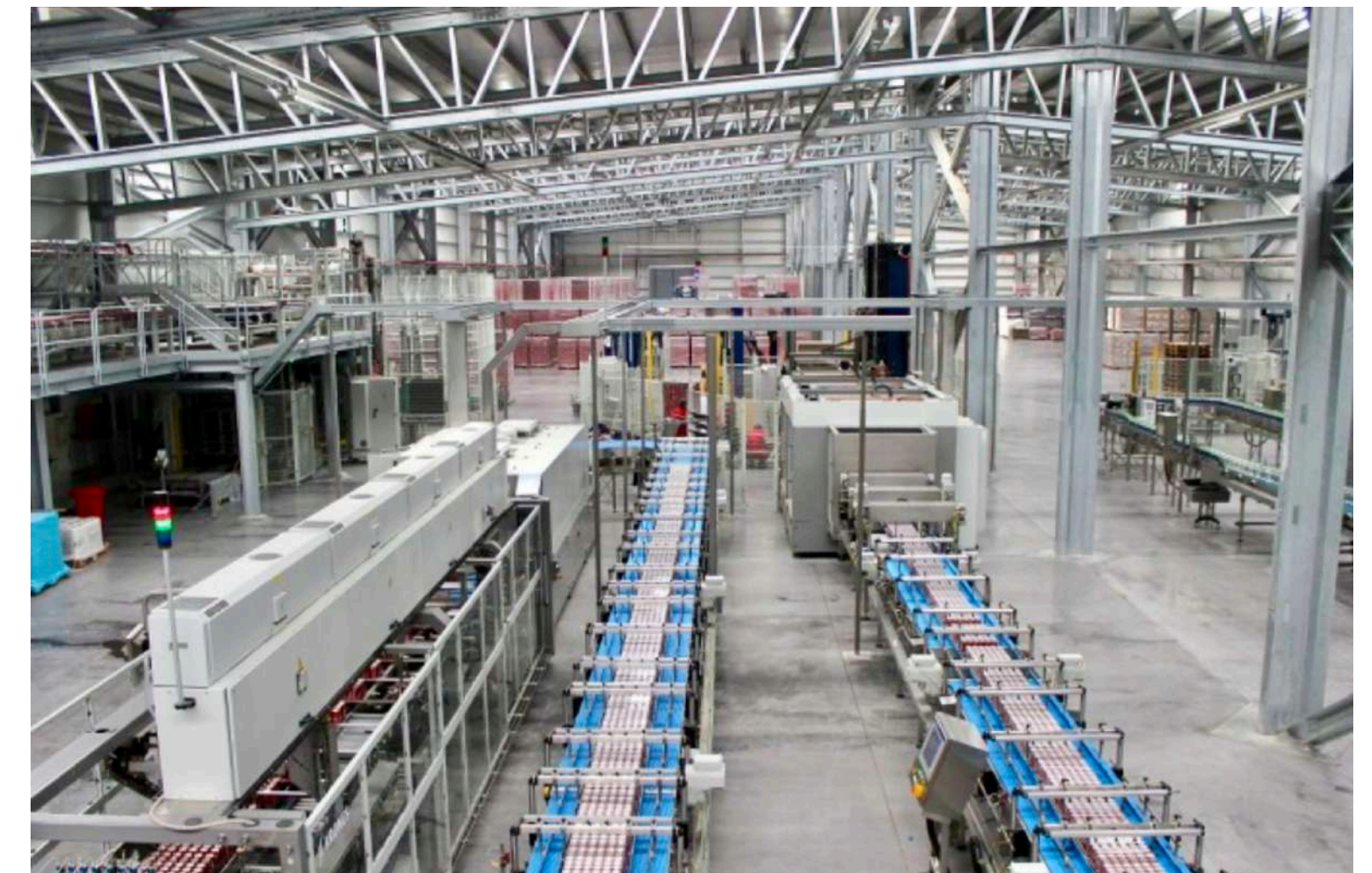
Location: Isparta, Turkey

Area: 16.700 m²

Production and Assembly Duration: 3 months

APEEC

Smart Steel Structures



COCA COLA BOTTLING FACTORY

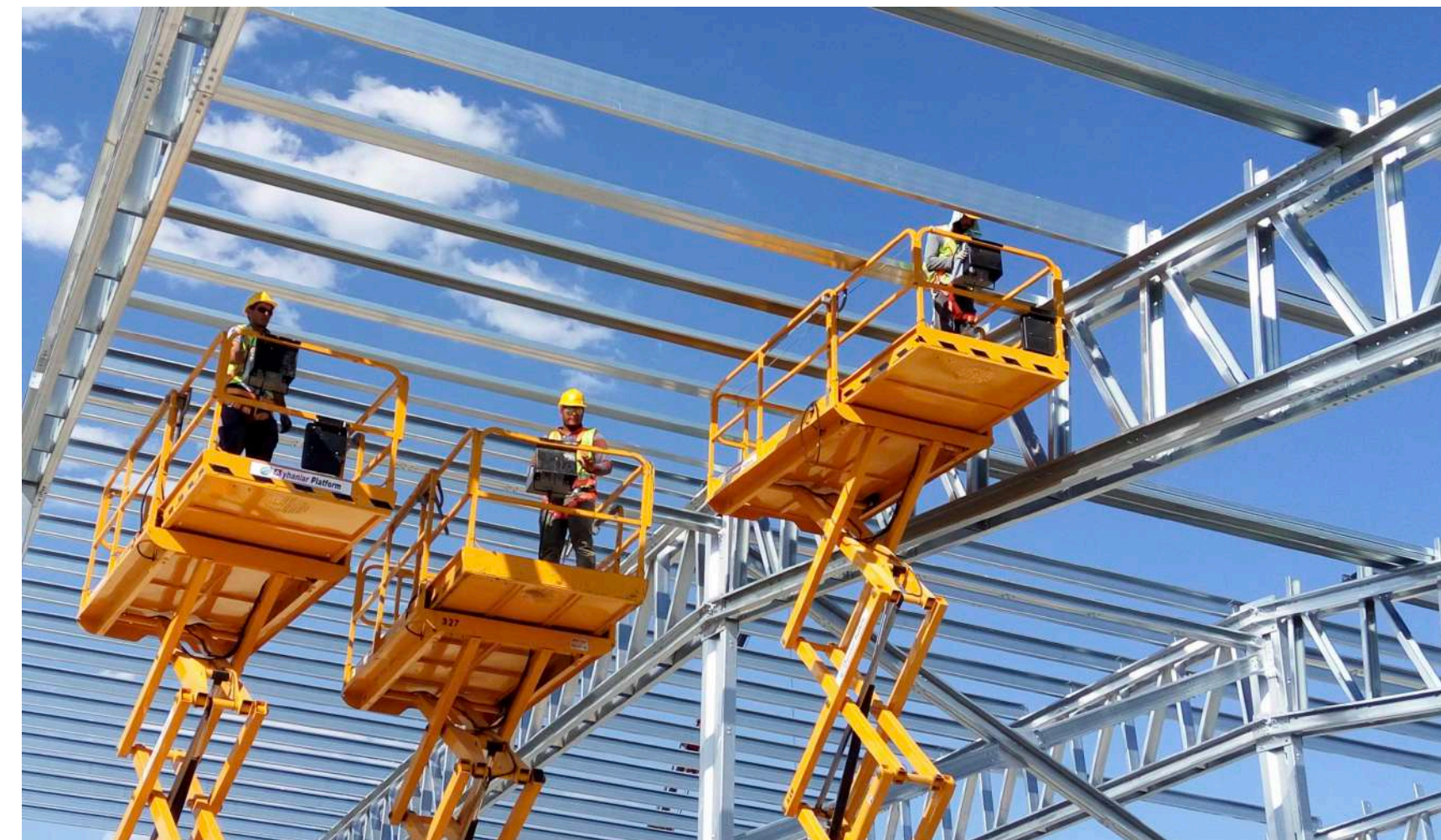
Location: Isparta, Turkey

Area: 16.700 m²

Production and Assembly Duration: 3 months

APEEC

Smart Steel Structures



COCA COLA BOTTLING FACTORY

Location: Isparta, Turkey

Area: 16.700 m²

Production and Assembly Duration: 3 months

APEC

Smart Steel Structures



PELIT ANTREPO PORT WAREHOUSE

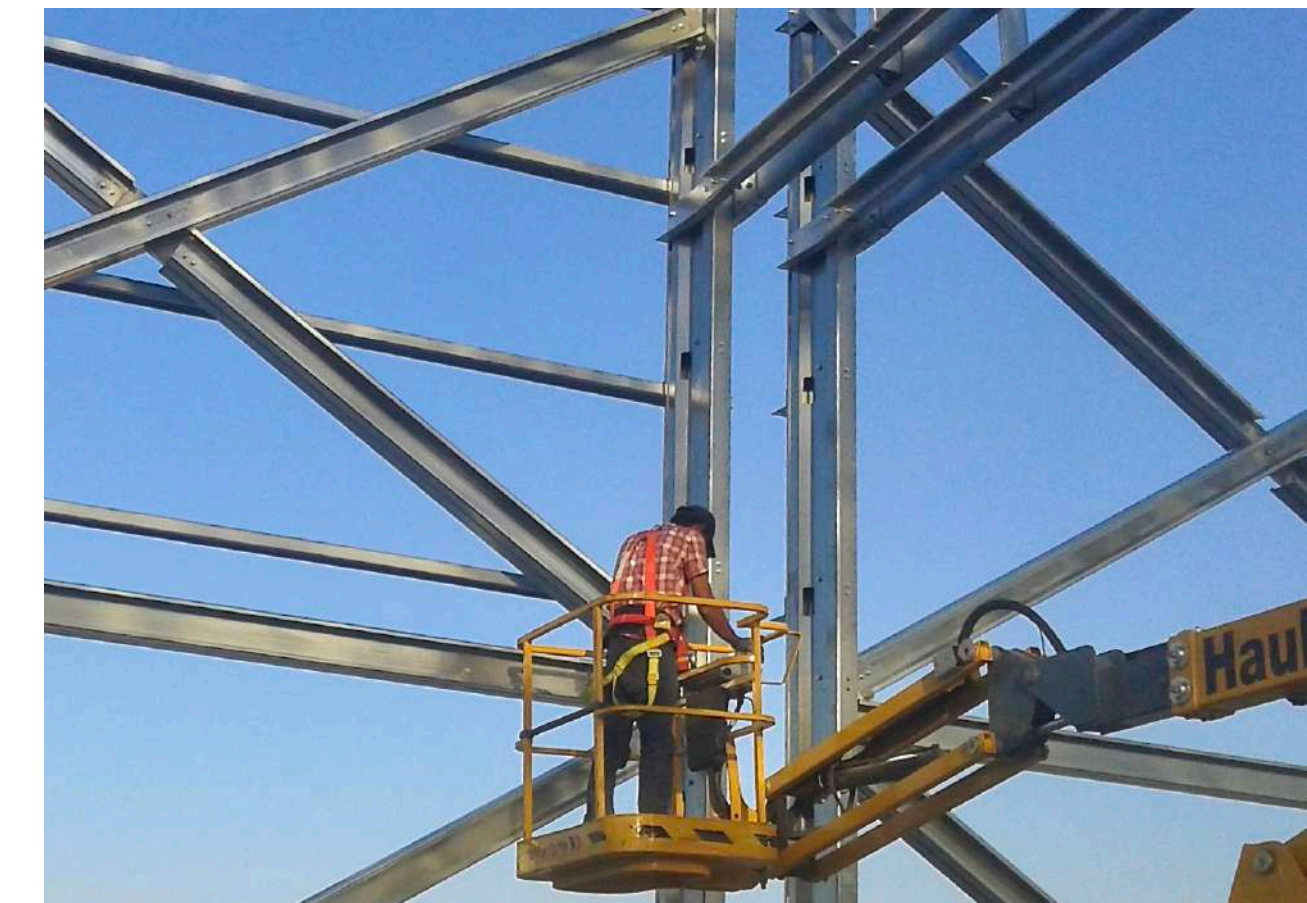
Location: Kocaeli, Turkey

Area: 7.000 m²

Production and Assembly Duration: 2 months

APEEC

Smart Steel Structures



FIRAT PLASTIC FACTORY AND OFFICES

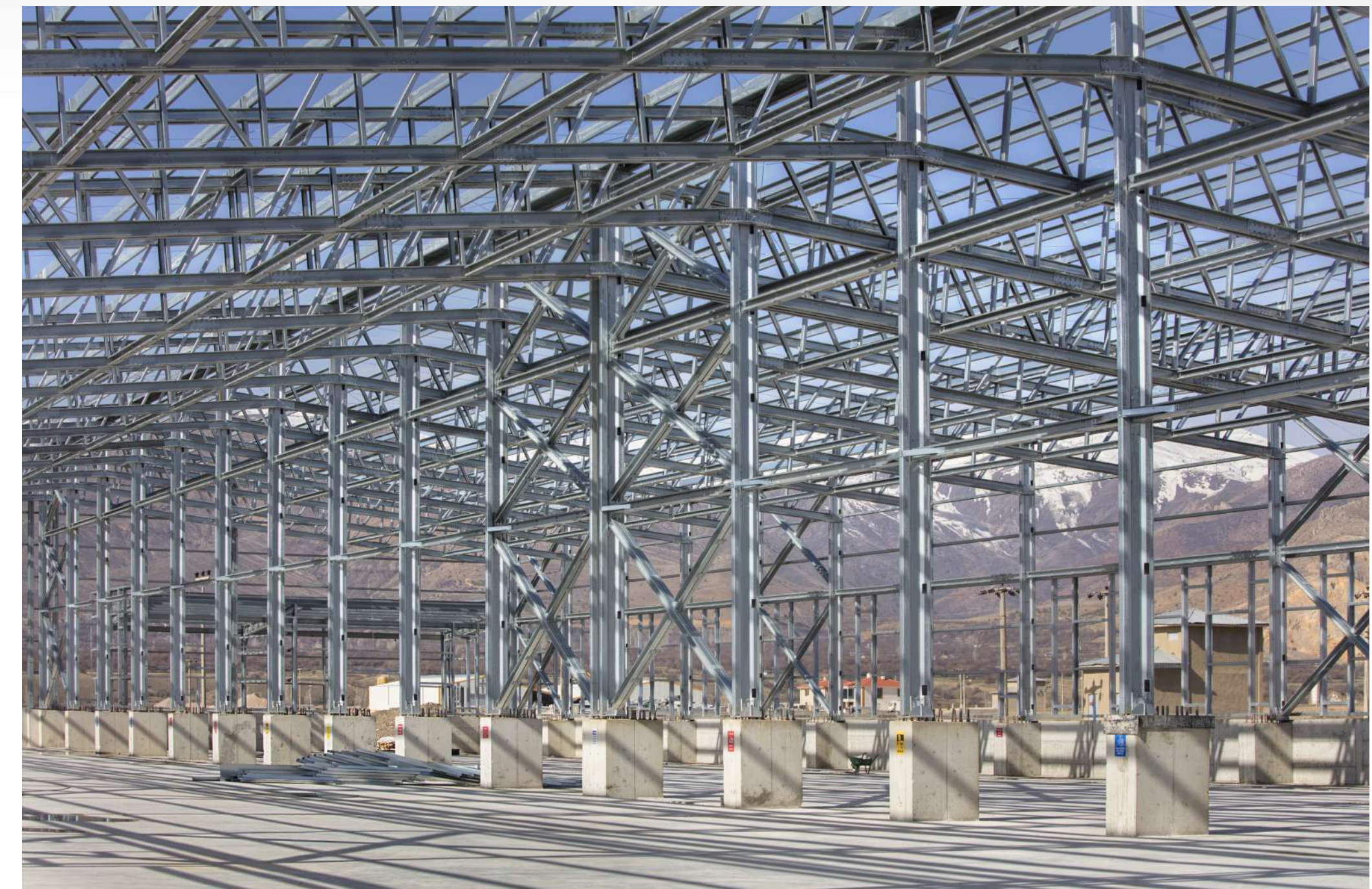
Location: Erzincan, Turkey

Area: 6.000 m²

Production and Assembly Duration: 50 days

APEC

Smart Steel Structures



TURKISH AIRLINES, ISTANBUL AIRPORT WAREHOUSES

Location: Istanbul, Turkey

Area: 5.800 m²

Production and Assembly Duration: 40 days

APEC

Smart Steel Structures



ISTANBUL UNIVERSITY, CERRAHPASA LOGISTICS WAREHOUSE

Location: Istanbul, Turkey

Area: 7.000 m²

Production and Assembly Duration: 60 days

APEEC

Smart Steel Structures



MIGROS HYPERMARKET

Location: Kocaeli, Turkey

Area: 3.860 m²

Production and Assembly Duration: 29 days

APEEC

Smart Steel Structures



PETROFER PRODUCTION AND STORAGE FACILITY

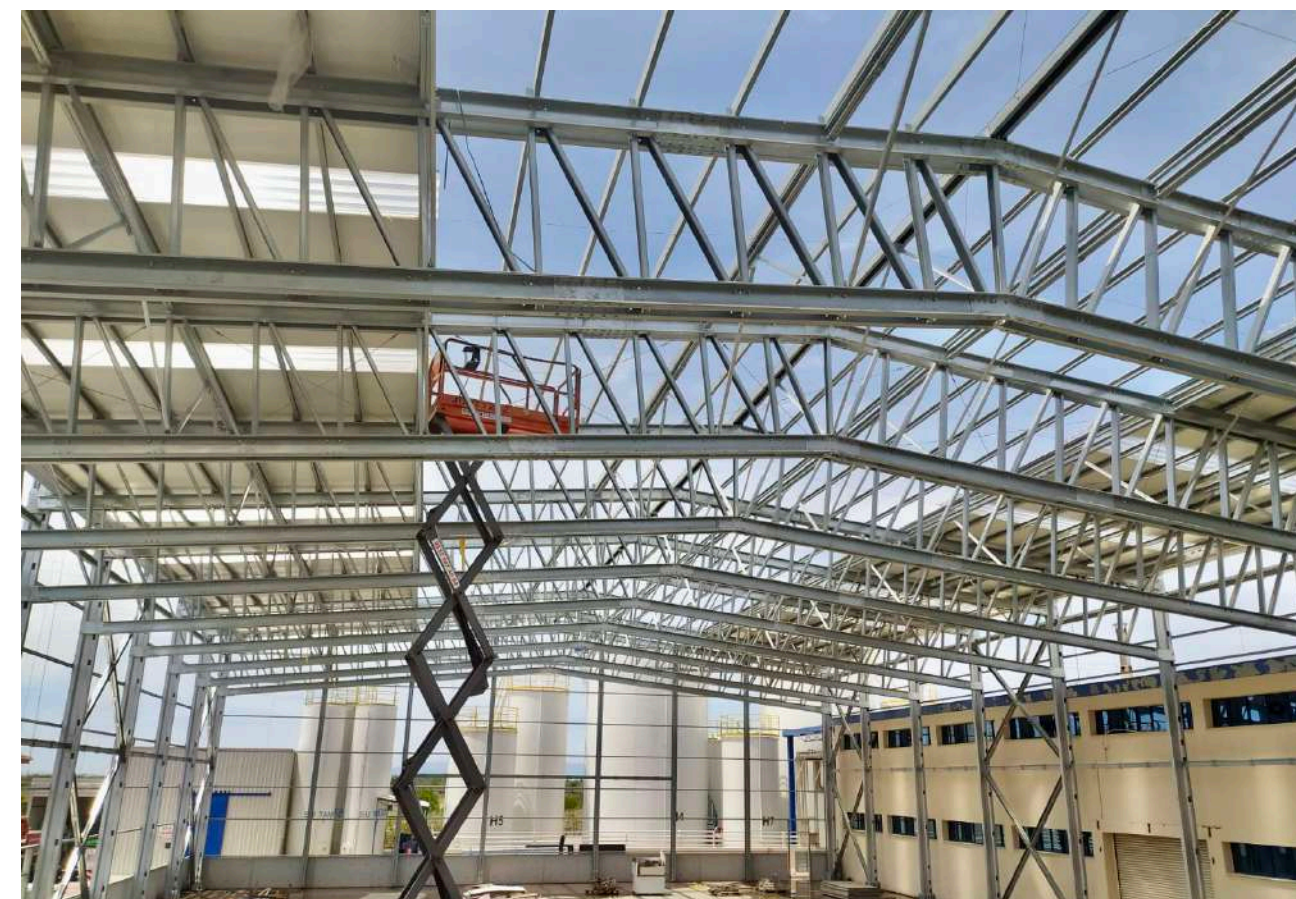
Location: İzmir, Turkey

Area: 3.000 m²

Infrastructure, Production and Assembly Duration: 7 months

APEC

Smart Steel Structures



UNILEVER LIPTON WAREHOUSE

Location: Kocaeli, Turkey

Area: 1.800 m²

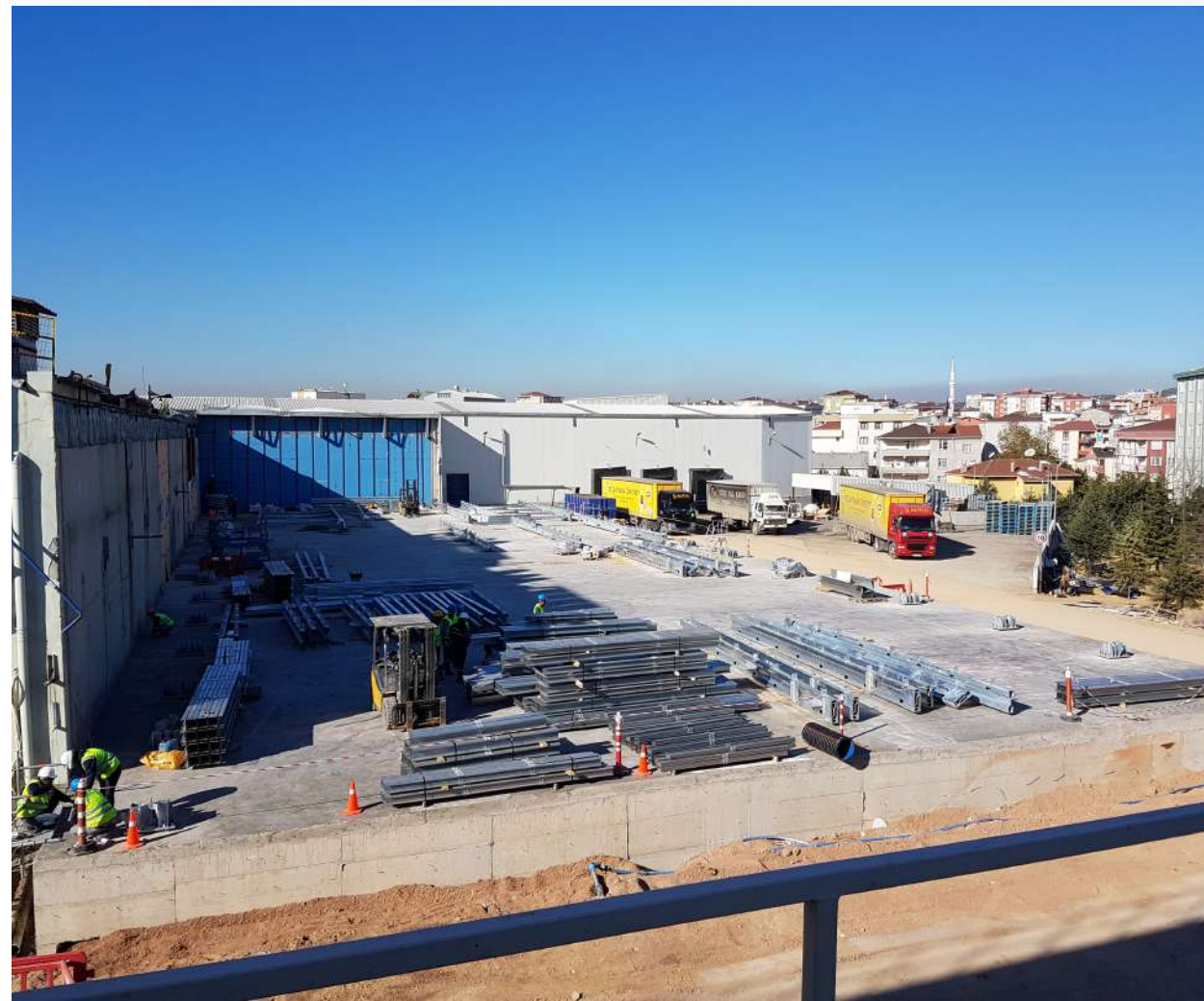
Clear Height: 18 m

Production and Assembly Duration: 21 days

APEC

Smart Steel Structures

DAY 1



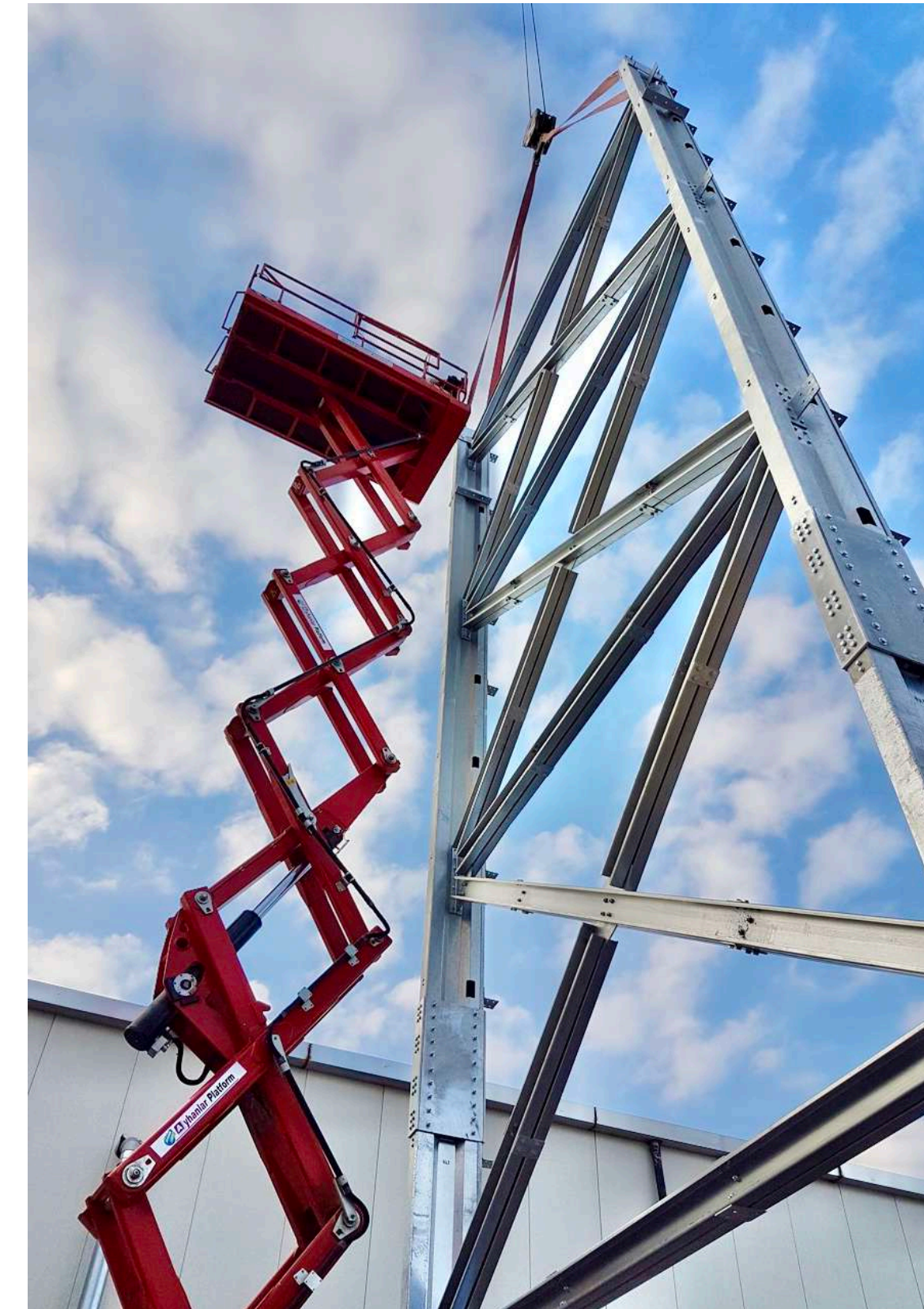
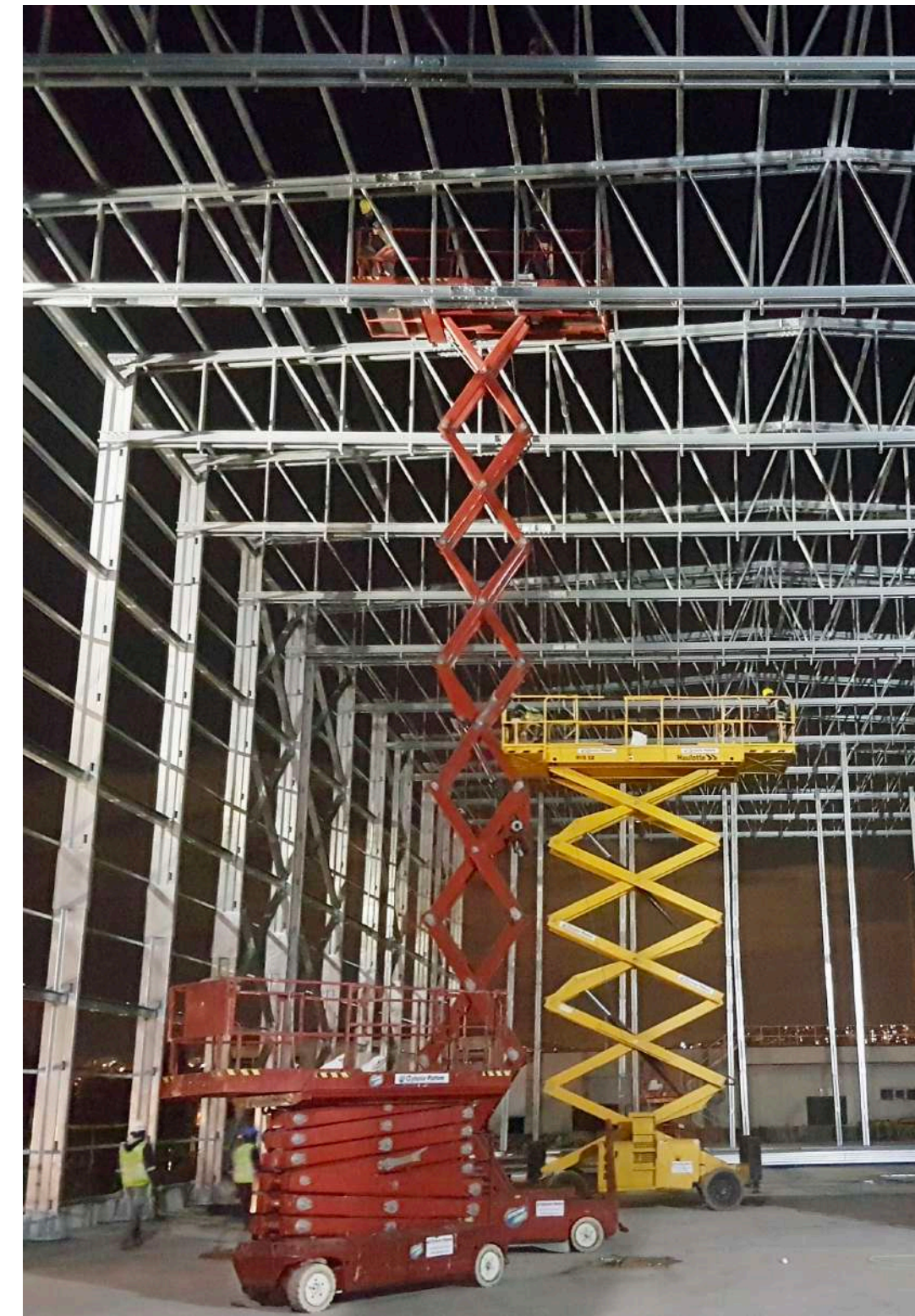
DAY 6



DAY 13



DAY 21



CARREFOUR HYPERMARKET

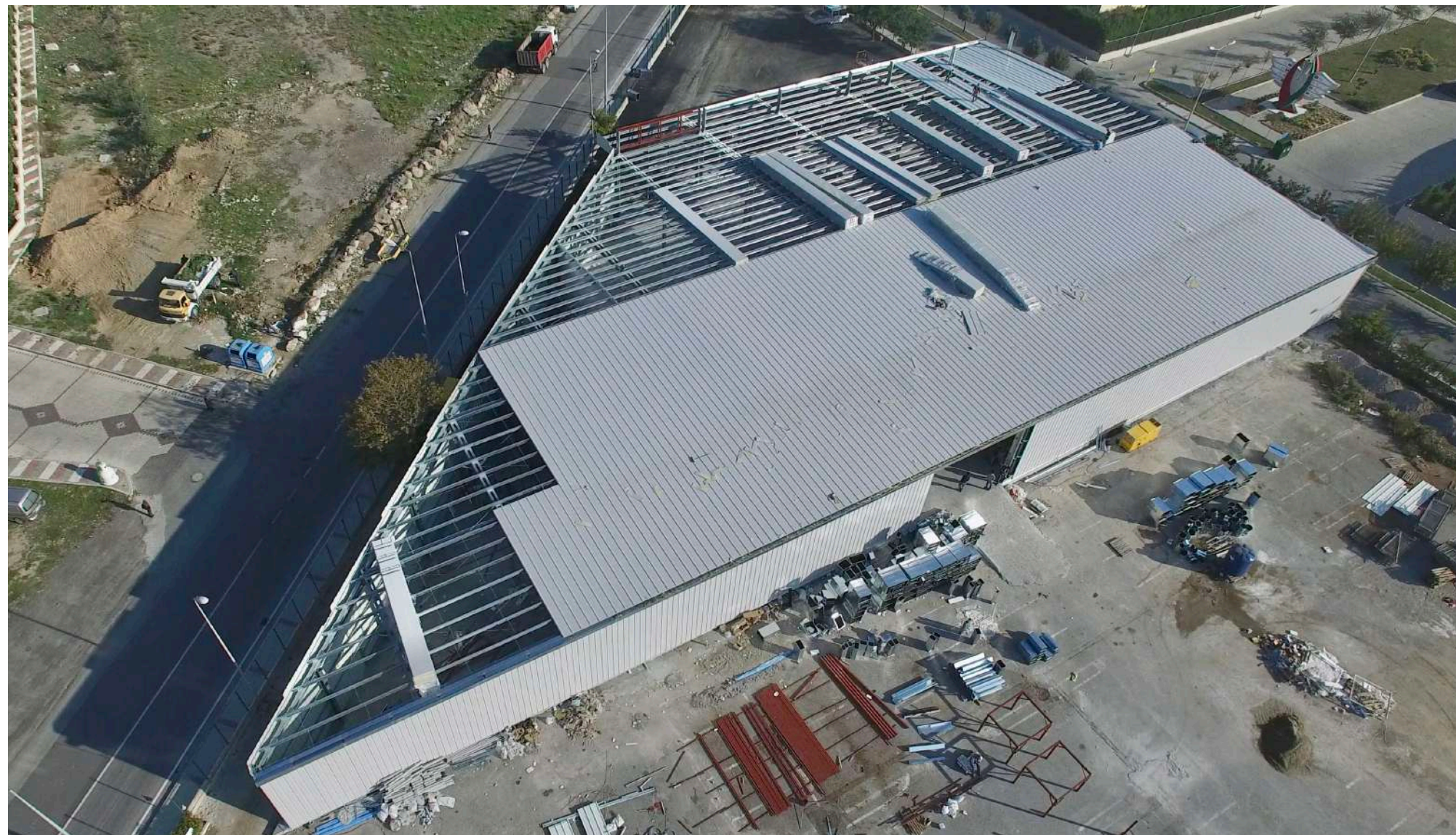
Location: İzmir, Turkey

Area: 2.050 m²

Production and Assembly Duration: 28 days

APEC

Smart Steel Structures



REAL ESTATE SALES OFFICE/SHOWROOM

Location: Istanbul, Turkey

Area: 550 m²

Production and Assembly Duration: 12 days

APEC

Smart Steel Structures



APEC

Smart Steel Structures

APEC Steel Manufacturing Facility

İzmit Yolu Caddesi No:26/28
Taşköprü, Yalova TURKEY

Phone: [+90 212 280 22 00](tel:+902122802200)

Phone: [+90 226 333 0 303](tel:+902263330303)

info@apcc.com.tr

www.apcc.com.tr



CFSEI
COLD-FORMED STEEL
ENGINEERS INSTITUTE



Steel Framing Alliance™
Steel. The Better Builder.